

SONY

3-758-304-23 (1)B73.A

WALKMAN

Radio Cassette Player

WM-FX405/FX407

Operating Instructions

WALKMAN is a trademark of Sony Corporation.

Sony Corporation © 1994

Printed in Malaysia

OWNER'S RECORD

The model number is located on the bottom and the serial number is located inside the cassette holder. Record these numbers in the spaces provided below. Refer to them whenever you call upon your Sony dealer regarding this product.

Model No. _____

Serial No. _____

INFORMATION

This equipment has been tested and found to comply with the limits for a Class B digital device, pursuant to Part 15 of the FCC Rules. These limits are designed to provide reasonable protection against harmful interference in a residential installation. This equipment generates, uses, and can radiate radio frequency energy and, if not installed and used in accordance with the instructions, may cause harmful interference to radio communications. However, there is no guarantee that interference will not occur in a particular installation. If this equipment does cause harmful interference to radio or television reception, which can be determined by turning the equipment off and on, the user is encouraged to try to correct the interference by one or more of the following measures:

- Reorient or relocate the receiving antenna.
- Increase the separation between the equipment and receiver.
- Connect the equipment into an outlet on a circuit different from that to which the receiver is connected.
- Consult the dealer or an experienced radio/TV technician for help.

This device complies with Part 15 of the FCC Rules. Operation is subject to the following two conditions:

- (1) This device may not cause harmful interference, and
- (2) this device must accept any interference received, including interference that may cause undesired operation.

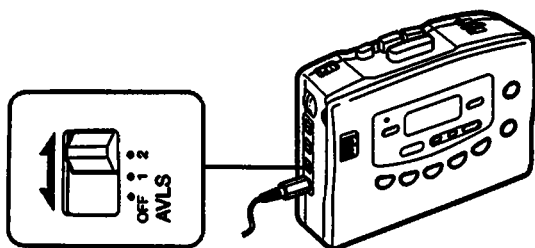
You are cautioned that any changes or modifications not expressly approved in this manual could void your authority to operate this equipment.

Featuring

AVLS (Automatic Volume Limiter System)

The AVLS selector allows you to limit the maximum volume of your Walkman personal stereo without degrading the sound quality.

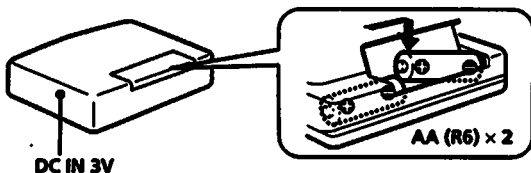
- When the AVLS selector is set to either position 1 or 2 (around 95 dB, 85 dB respectively), the volume will be kept at a moderate level without the degradation of the sound quality, even if you attempt to turn the volume up higher.
- When the AVLS selector is set to either position 1 or 2, the playback sound may be distorted or unstable according to the music (especially bass boosted part). If this happens, turn down the volume.
- When the AVLS selector is turned off, you will be able to enjoy the full volume capability of your Walkman personal stereo.



Getting Started

Using with Batteries

Insert two AA (R6) batteries in correct polarity.



Notes

- When you are not going to use your Walkman for a long time, remove the batteries to prevent damage from battery leakage and corrosion.
- When the batteries become weak, the BATT indicator will glow faintly and the sound will be unstable or can not be heard. In such a case, replace both batteries.
- Replace both batteries within 5 minutes, not to clear the memories.

Using External Power Sources

You can connect the following external power sources through the DC IN 3 V jack located on the right side. (When you plug a cord into the DC IN 3 V jack, the internal batteries are automatically bypassed.)

- House current using an AC-E30L AC power adaptor
- 12 V car battery using a DCC-E130L car battery cord

Note

Use only the recommended AC-E30L AC power adaptor (not supplied). Do not use any other AC power adaptor.

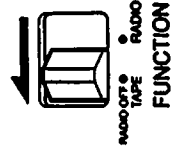


Polarity of the plug

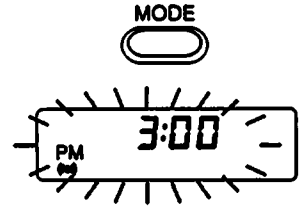
Setting the Clock

Setting the Alarm

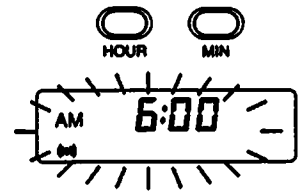
- 1** Set the FUNCTION selector to TAPE/RADIO OFF.



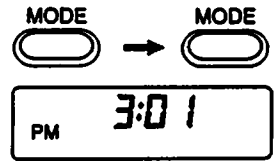
- 2** Press the MODE button once to enter the alarm setting mode.



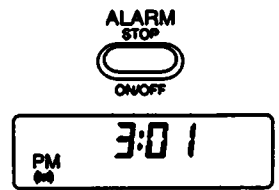
- 3** Set the alarm time by using the HOUR/MIN buttons within 10 seconds of flashing.



- 4** Press the MODE button twice to return to the current time display.



- 5** Press the ALARM button to set the alarm on.

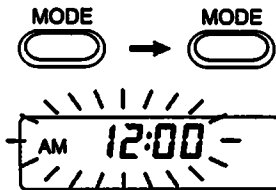


Setting Current Time

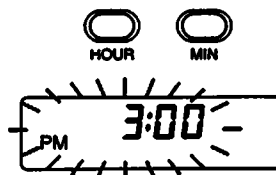
- 1** Set the FUNCTION selector to TAPE/RADIO OFF.



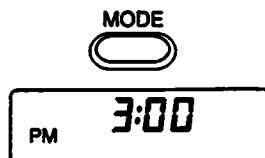
- 2** Press the MODE button twice to enter the current time setting mode.



- 3** Set the time by using the HOUR/MIN buttons within 10 seconds of flashing.



- 4** Press the MODE button once to return to the current time display.

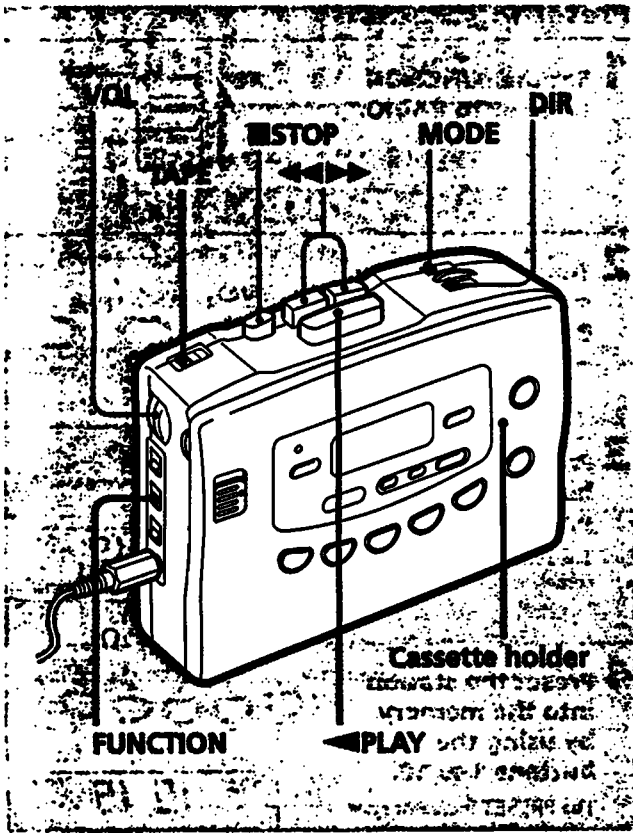


To stop the alarm	Press the ALARM button.
To cancel the alarm setting	Press the ALARM button until the indicator goes off.

Notes

- The hour display does not advance even when the minute display returns to "00" after "59".
- You can hear the alarm from inside of the Walkman and also through the headphones when operating the tape player and radio.
- The hour display is on a 12-hour cycle.
- Even if you do not press the ALARM button, the alarm will automatically stop after 10 minutes or so.
- The preset alarm time will not be canceled even if you press the ALARM button and the indicator goes off.

Playing Cassettes



Operating the Cassette Player

To wind the tape	Press ◀◀ or ▶▶.
To change sides	Set DIR.
To play both sides once	Set MODE to ↔.
To play both sides repeatedly	Set MODE to ↻.
To adjust the volume	Set the VOL control.
To stop	Press ■ STOP.

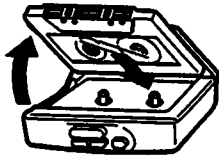
Note on the DIR switch

When the MODE switch is set to ↻, the DIR switch turns automatically at the end of a cassette. If the switch does not turn automatically, check to make sure the MODE switch is properly set (see above). If the DIR switch still does not turn, the batteries are weak. Replace them with a new set of batteries.

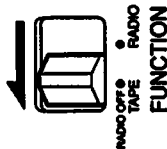
Notes on playing cassettes

- Do not use cassettes longer than 90 minutes except for long continuous playback.
- If the tape is playing but no sound comes out, the batteries may be weak. Replace all batteries with new ones.
- If your Walkman has not been used for a long time, run the Walkman for a few minutes before inserting a cassette.
- Do not wind the headphones cord around the Walkman. The buttons may be kept pressed, causing unnecessary battery usage.
- Do not open the cassette holder while the tape is running.

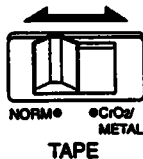
1 Insert a cassette.



2 Set the FUNCTION selector to TAPE/RADIO OFF.



3 Set the TAPE selector to NORM or CrO₂/METAL to match the tape type.

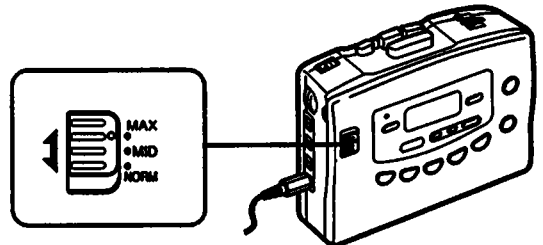


4 Press the ◀ PLAY button.



Using MEGA BASS

Set the MEGA BASS selector to the MID or MAX position to produce deep and powerful sound.

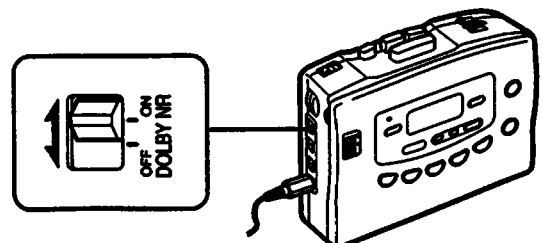


When using MEGA BASS

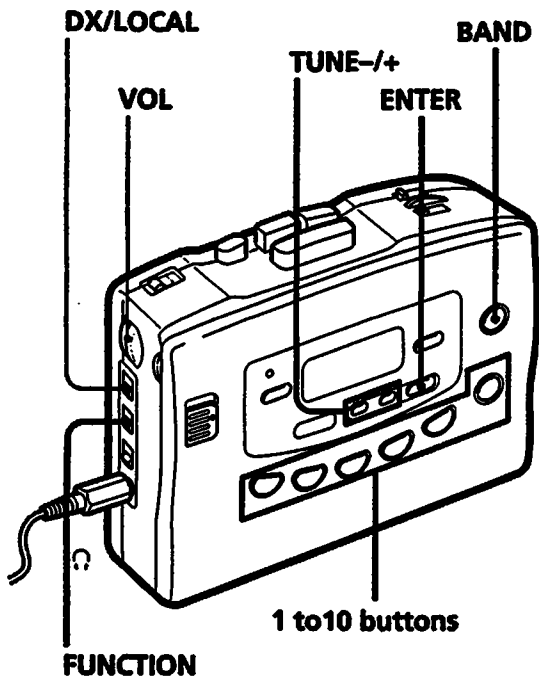
If the AVLS selector is set to 1 or 2, the MEGA BASS effect is reduced.

Using DOLBY NR

Set the DOLBY NR switch to ON to play Dolby NR processed tapes

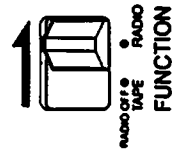


Listening to the Radio



Presetting Stations

1 Set the **FUNCTION** selector to **RADIO**.

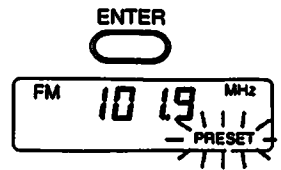


2 Tune in the desired station by using the **BAND** and **TUNE -/+** buttons.



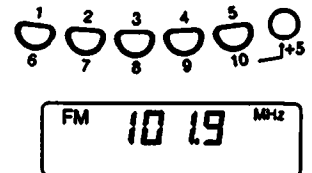
3 Press the **ENTER** button to enter the presetting mode.

The **PRESET** indicator comes on and starts flashing.



4 Preset the station into the memory by using the **buttons 1 to 10**.

The **PRESET** indicator goes off after 5 seconds.



Note

To preset stations on buttons 6 to 10, first press the +5 button and then press a button from 1 to 5. Both the +5 indicator and then the **PRESET** indicator come on in the display and go off after 10 seconds.

Note

To stop the presetting procedure just after pressing the **ENTER** button, press the **ENTER** button again. The **PRESET** indicator goes off.

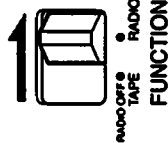
To recall the preset station

Press the corresponding preset button.

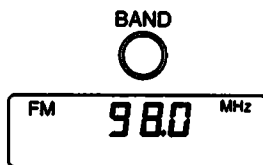
The **PRESET** indicator comes on and goes off after 5 seconds.

To recall preset stations on buttons 6 to 10, first press the +5 button and then press a button from 1 to 5. Both the +5 indicator and then the **PRESET** indicator come on in the display and go off after 10 seconds.

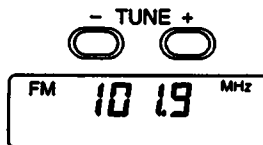
1 Set the **FUNCTION** selector to **RADIO**.



2 Press the **BAND** button to select the band.



3 Press the **TUNE -/+** buttons to tune in the desired station.



To adjust the volume	Set the VOL control.
To turn off	Set the FUNCTION selector to TAPE/RADIO OFF .

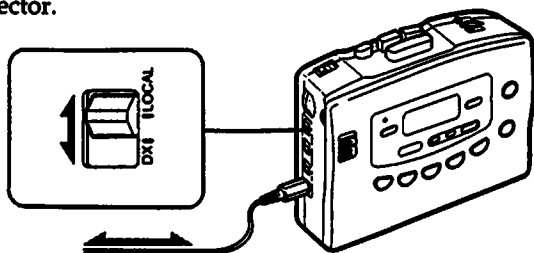
Notes

- When you press the **TUNE -** or **+** button for more than half a second, the automatic tuning begins. At the desired station found by observing the display, press the **TUNE -** or **+** button again.
- The **STEREO** indicator comes on in the display when receiving a stereo broadcast.
- If you have inserted a cassette with a metallic shell or label, and interference in radio reception occurs, remove the cassette.

Improving Radio Reception

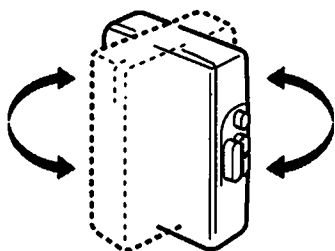
Improving FM reception

Extend the headphones cord or adjust the DX/LOCAL selector.



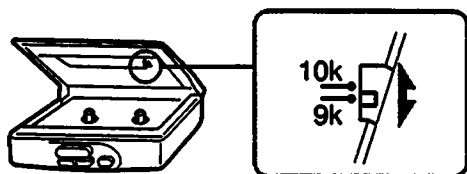
Improving AM reception

Rotate the Walkman.



Changing the AM tuning interval

The AM tuning interval is factory preset to 10 kHz in order to match the local frequency allocation system. If you use the receiver in an area where the frequency allocation system is based on 9 kHz interval, change the position of the switch with a thin instrument.



Note

If you change the interval, the memories of all the preset stations, the current time, and the alarm time will be canceled.

If the display shows incorrect information

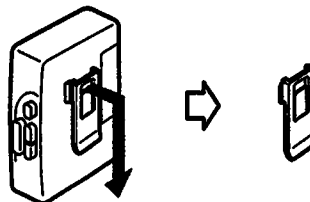
When you use the Walkman for the first time or when you have left the Walkman without batteries for a long period of time, the display may show incorrect information or the preset stations may not be recalled correctly. If this happens, using a thin instrument, change the AM tuning interval which is illustrated above to the other position and reset it to the original position. The memories of all the preset stations, the current time, and the alarm time will be canceled. After that, set the clock to the current time again.

Using the Belt Clip

With the supplied belt clip, you can wear your Walkman on a belt for convenient use.

Removing the Belt Clip

Lift the tab slightly and push down with your finger to remove the belt clip from the Walkman.



Attaching the Belt Clip

Align the belt clip with the grooves on the back of the Walkman and slide the belt clip up until you hear a click, to firmly attach it to the Walkman.



Specifications

Radio Frequency

FM: 87.5 - 108 MHz (0.1 MHz step)
AM: 530 - 1,710 kHz (10 kHz step)

Power Requirements

3 V DC Batteries AA (R6) × 2
External DC 3 V power sources

Battery Life

(approximate hours when using the batteries specified below)

Battery	Playback	Radio
Sony Alkaline AM3 (N)	10 hours	27 hours
Sony SUM-3 (NS)	4 hours	15 hours

Dimensions

114.5 × 91.6 × 37 mm (4½ × 3½ × 1½ in.) (w/h/d)
incl. projecting parts

Mass 210 g (7.5 oz) incl. batteries

Supplied Accessories


- Stereo headphones (1)
- Belt clip (1)

Optional Accessories

- AC power adaptor AC-E30L
- Car battery cord DCC-E130L

Your dealer may not handle some of the optional accessories listed above. Please ask the dealer for detailed information.

Design and specifications are subject to change without notice.

Dolby noise reduction manufactured under license from Dolby Laboratories Licensing Corporation.
"DOLBY" and the double-D symbol  are trademarks of Dolby Laboratories Licensing Corporation.

Precautions

Notes on headphones Concerning Road Safety

Do not use headphones while driving, cycling, or operating any motorized vehicle. It may create a traffic hazard and is illegal in many areas. It can also be potentially dangerous to play your headsets at high volume while walking, especially at pedestrian crossings. You should exercise extreme caution or discontinue use in potentially hazardous situations.

Preventing hearing damage

Do not use headphones at high volume. Hearing experts advise against continuous, loud and extended play. If you experience a ringing in your ears, reduce volume or discontinue use.

Caring for others

Keep the volume at a moderate level. This will allow you to hear outside sounds and to be considerate to the people around you.

Taking Care of Your Walkman

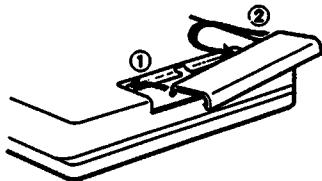
- Do not expose the Walkman to extreme temperatures, direct sunlight, moisture, sand, dust or mechanical shock. Never leave the Walkman in a car parked in the sun.
- Prolonged use may contaminate the tape head. If sound drop-out or excessive noise occurs, clean the head and tape path with alcohol.



- Clean the headphones plug periodically for optimum sound.
- Do not use alcohol, benzine or thinner to clean the case.

About the Battery Compartment Lid

If the battery compartment lid is detached by an accidental drop, excessive force etc., attach it as illustrated in the numbered order.



If you have any question or problem concerning your Walkman, please consult your nearest Sony dealer.

SONY

Tape Cassette Player/Recorder CD Player/Mini Disc
DAT/Rebo-Head Phone-Scanner-MC Personal

Portable Audio

LIMITED WARRANTY

SONY ELECTRONICS INC. ("SONY") warrants the Product including any accessories against defects in material or workmanship as follows:

1. **LABOR.** For a period of 90 days from the date of purchase, if the Product is determined to be defective, Sony will repair the Product at no charge, or pay the labor charges to any SONY authorized service facility. After the Warranty Period, you must pay for all labor charges.

2. **PARTS.** In addition, SONY will supply, at no charge, new or rebuilt replacements at no charge for defective parts for a period of one (1) year. After 90 days from the date of purchase, labor for removal and installation is available from SONY authorized service facilities or a Sony Service Center at your expense.

To obtain warranty service, you must take the Product, or deliver the Product freight prepaid, in either its original packaging or packaging affording an equal degree of protection, to any authorized SONY service facility.

This warranty does not cover customer instruction, installation, set up adjustments or signal reception problems.

This warranty does not cover cosmetic damage or damage due to acts of God, accident, misuse, abuse, negligence, commercial use, or modification of, or to any part of the Product, including the antenna. This warranty does not cover damage due to improper operation or maintenance, connection to improper voltage supply, or attempted repair by anyone other than a facility authorized by Sony to service the Product. This warranty does not cover Products sold AS IS or WITH ALL FAULTS, or consumables (such as fuses or batteries). This warranty is valid only in the United States.

Proof of purchase in the form of a bill of sale or receipted invoice which is evidence that the unit is within the Warranty period must be presented to obtain warranty service.

This warranty is voided if the factory applied serial number has been altered or removed from the Product.

REPAIR OR REPLACEMENT AS PROVIDED UNDER THIS WARRANTY IS THE EXCLUSIVE REMEDY OF THE CONSUMER. SONY SHALL NOT BE LIABLE FOR ANY INCIDENTAL OR CONSEQUENTIAL DAMAGES FOR BREACH OF ANY EXPRESS OR IMPLIED WARRANTY ON THIS PRODUCT EXCEPT TO THE EXTENT PROHIBITED BY APPLICABLE LAW. ANY IMPLIED WARRANTY OF MERCHANTABILITY OR FITNESS FOR A PARTICULAR PURPOSE ON THIS PRODUCT IS LIMITED IN DURATION TO THE DURATION OF THIS WARRANTY.

Some states do not allow the exclusion or limitation of incidental or consequential damages, or allow limitations on how long an implied warranty lasts, so the above limitations or exclusions may not apply to you. In addition, if you enter into a service contract with the Sony Partnership within 90 days of the date of sale, the limitation on how long an implied warranty lasts does not apply to you. This warranty gives you specific legal rights, and you may have other rights which vary from state to state.

For your convenience, SONY ELECTRONICS INC. has established telephone numbers for frequent ly asked questions.

To locate the service or dealer nearest you, call:

1-800-342-5721

For service assistance or resolution of a service problem, call:

SONY CUSTOMER RELATIONS CENTER
1-800-282-2848

For Product information or operation, call:

SONY CUSTOMER INFORMATION CENTER
1(201)-368-8272
or write to:
Sony Customer Information Center
One Sony Drive
Park Ridge, New Jersey 07656-8003

For an accessory or part not available from your authorized dealer, call:

1-800-486-SONY (17669)